

LEAP

WATERLINK



FLEXIBLE POLYBUTYLENE PLUMBING SYSTEM

WATERLINK

HIGH INTEGRITY, HIGH PERFORMANCE POLYBUTYLENE PIPES AND FITTINGS

WATERLINK from LEAP is a flexible polybutylene plumbing system for hot and cold water reticulation. Flexible polybutylene pipe enables pipe to be cabled into position, meaning fewer connections and minimised installation and alteration costs. WATERLINK fittings are available in crimp-fit connection system. WATERLINK crimp fittings are manufactured from DR brass with copper alloy crimp rings attached. The crimp rings incorporate inspection holes to enable the installer to ensure pipe is fully inserted into the fitting before crimping.

WATERLINK FEATURES

Flexible and better cabling ability	Corrosion free
Less connections	Measure, cut and joint
Low wastage	Minimum scale build-up
High resistance to impact	Reduce chance of pipes bursting due to freezing
Cool to touch	Quiet

PIPE CONNECTION SYSTEM



CRIMP FITTINGS

POLYBUTYLENE PIPE



GREY - HOT AND COLD WATER

WATERLINK

CRIMP FITTING SELECTOR



Straight Connector

18mm x 18mm
22mm x 22mm

WLCR SC1818
WLCR SC2222



Branch Reducing Tee

22mm x 22mm x **18mm** WLCR RT222218



Straight Reducer

22mm x 18mm

WLCR SR2218



Branch & End Reducing Tee

22mm x 18mm x **18mm** WLCR RT221818



Equal Bend

18mm x 18mm
22mm x 22mm

WLCR EB1818
WLCR EB2222



End Reducing Tee

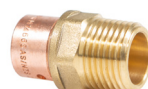
22mm x 18mm x **22mm** WLCR RT221822



Angle Equal Bend

18mm
22mm

WLCR AEB1818
WLCR AEB2222



Male Adaptor

18mm x 1/2"
22mm x 3/4"

WLCR MA18.15
WLCR MA22.20



Equal Tee

18mm x 18mm x 18mm WLCR ET181818
22mm x 22mm x 22mm WLCR ET222222



Female Adaptor

18mm x 1/2"
22mm x 3/4"

WLCR FA18.15
WLCR FA22.20

Note: **bold** = branch size

WATERLINK

CRIMP FITTING SELECTOR



Male Bend Adaptor

18mm x 1/2" WLCR MBA18.15
22mm x 3/4" WLCR MBA22.20



Male Wingback Elbow

18mm x 1/2" WLCR MWE18.15



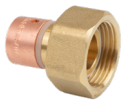
Female Elbow Swivel Adaptor

18mm x 1/2" WLCR FESA18.15
22mm x 3/4" WLCR FESA22.20



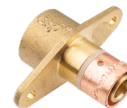
Female Wingback Elbow

18mm x 1/2" WLCR FWE18.15
22mm x 3/4" WLCR FWE22.20



Female Swivel Adaptor

18mm x 1/2" WLCR FSA18.15
18mm x 3/4" WLCR FSA18.20
22mm x 3/4" WLCR FSA22.20



Hose Plate

18mm x 1/2" WLCR HP18.15



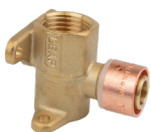
Double Fixed Male Wingback Elbow (100mm)

18mm x 1/2" (100) WLCR DMWE18.15 (100)



Blanking Plug

18mm WLCR BP18
22mm WLCR BP22



Double Fixed Female Wingback Elbow

18mm x 1/2" WLCR DFWE18.15



Crimp Ring

18mm WLCR CR18
22mm WLCR CR22

WATERLINK

TRANSITIONAL FITTING SELECTOR



Transition Fitting PB - Copper Connector

18mm PB x 1/2" CU WLPF PBCU18.15NZ
22mm PB x 3/4" CU WLPF PBCU22.20NZ



Transition Fitting PEX -PB Connector

16mm x AS18mm PB (PN16) WTPF PXPB16.18
20mm x AS22mm PB (PN16) WTPF PXPB20.22

PIPE SELECTOR



Pipe, Straight Coil

18mm - 25m Coil WLSC25.18
22mm - 25m Coil WLSC25.22



Pipe, Straight Length

18mm - 5m Length WLPL05.18
22mm - 5m Length WLPL05.22

TOOL SELECTOR



Manual Crimping Tool with Crimp Gauge

18mm WLCR MCT-18
22mm WLCR MCT-22
18mm + 22mm WLCR MCT-1822



Pipe Cutter

Pipe Cutter PCT16.32

PIPE CONNECTIONS

The flexible WATERLINK system guarantees a professional installation when installed by a licensed plumber.

PIPE CONNECTION USING CRIMP FITTINGS

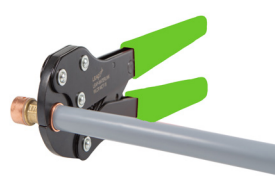
ATTACHMENT



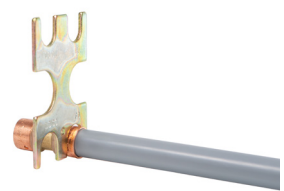
1. Cut the pipe at one of the insertion marks. Ensure the pipe end is free from burrs. Use only purpose designed cutters.



2. Select the required fitting and insert the pipe fully into the fitting up to the shoulder so that inserted pipe is clearly visible through the inspection holes.



3. Position the crimp tool jaws slightly away from the retaining ring at 90° to the pipe. Check the pipe and fitting are aligned before closing the handles of the tool to its stop point.



4. Check the completed crimp joint with the crimp gauge, the gauge must fit over the crimped area of the ring without using any force.

DETACHMENT

If the joint does not pass step 4:

1. Check the joint has been crimped
2. Remove fitting and replace
3. Check and adjust the crimp tool

Note: Under-crimped joints must be replaced and NOT double Crimped. Double crimping can lead to future stress failures.

CONNECTION TO COPPER PIPING



1. Cut copper pipe using an appropriate copper tube cutter. Inspect ends to ensure free from burrs, swarf, scratches or dents.



2. The cut pipe must be deburred using an approved and appropriate deburring tool to ensure a round and smooth pouring angle on the pipe end both on the inside and outside.

Please take extra care while deburring.



3. Push pipe firmly into copper end of PB-Copper Connector fitting.



4. Tug back on the pipe to ensure grab ring engages properly.

KEY INFORMATION

WATERLINK KEY INFORMATION

- WATERLINK should always be installed in accordance with AS/NZS 3500 National Plumbing Code and NZBC G12 Water Supplies.
- WATERLINK does not corrode or cause “blue water” in soft water areas or scale up in hard water areas.
- WATERLINK minimises water hammer and provides a quiet plumbing system.
- WATERLINK is manufactured to AS/NZS 2642 Parts 2 & 3 Polybutylene Pipe Systems.
- WATERLINK must be shielded or painted to protect from UV light when used externally for extended periods.
- WATERLINK should not be used when exposed to petroleum solvents at any time.
- WATERLINK should not be used in continuously circulating hot water loops above 60°C without consultation.
- Avoid placing heavy loads or sharp objects on top of pipe coils or lengths.

TEMPERATURE-PRESSURE RELATIONSHIP

TEMPERATURE					
°C	20	40	60	70	90
°F	68	104	140	176	194
PRESSURE					
kPa	1,600	1,370	1,050	700	600
Bar	16.0	13.7	10.5	7.0	6.0
PSI	228	195	150	100	85

Temperature & pressure relationship is for operational purposes and not failure pressure. However, where continuously circulating hot water is being used above 60 °C, please consult LEAP

FLEXIBILITY OF WATERLINK POLYBUTYLENE PIPES

WATERLINK pipes can be bent and repeatedly flexed without incurring damage subject to minimum bend radius as per the table below – eight times the diameter of the pipe. Where tighter bends are required, elbows or pipe supports must be used. All bent pipe must be supported using pipe clips or other pipe support to minimize undue stress on the pipe or fitting joints. Care should be taken to avoid over bending and buckling the pipe.

Pipe Designation	Mean O.D	Min Radius
AS15	12.6 mm	102 mm
AS18	15.8 mm	130 mm
AS22	22.1 mm	183 mm
AS28	27.9 mm	204 mm

Note: If a pipe is kinked during installation that portion of the pipe must be cut out and replaced otherwise pipe failure will occur at the point of the kink.

PRESSURE TESTING

AS/NZS 3500 requires all installations be hydrostatically tested. For installations with WATERLINK the recommended test pressure is 1500kPa and should not be less than 30 minutes in accordance with AS/NZS 3500. Care should be taken to disconnect any appliances or fittings that will not withstand, or will be damaged by testing at 1500kPa.

REMEMBER! Pressure testing is NOT a substitute for making sure the correct insertion depth of the tube into the fitting has been achieved.

WATERLINK WARRANTY



WaterMark
AS/NZS2642



WATERLINK polybutylene pipes and fittings, installed by a licensed plumber in accordance with the current published installation guidelines, are warranted against material or manufacturing defects for a period of 25 years.

WATERLINK is manufactured under Watermark Licence No. WM74665 and WM74666 (AS/NZ 2642 Part 2 and Part 3) is approved for use in all Australian States and Territories, and New Zealand subject to the installation requirements outlined in the National Plumbing and Drainage Code, AS/NZS 3500 Parts 1 & 4, and any local water authority requirements.

OTHER SYSTEMS



HOT AND COLD PLUMBING SYSTEM

WATERTITE is a high integrity and high performance piping system designed to offer installers the benefits of a high temperature and a flexible non-metallic pipe. WATERTITE pipe is manufactured using crosslinking technology first developed in Europe and performs in ways that provide superior reliability, durability and safety.



GAS PIPING SYSTEM

GASTITE is a composite piping system designed to offer installers the benefits of both metal and plastic. GASTITE pipe is a multi-layer PEX piping system. GASTITE fittings are manufactured from DR brass. All pipes and fittings are manufactured using the latest extrusion, moulding and machining techniques to ensure a perfect connection every time.



COPPER PRESS FITTING SYSTEM

COPPERLINK from LEAP is a copper press fitting system engineered to offer installers the benefits of flameless mechanical press joining technology to make a superior robust pipe joint. COPPERLINK press fittings are manufactured using state-of-the-art manufacturing technologies to provide superior reliability, durability, and safety.



HOME FIRE SPRINKLER SYSTEM

BLAZESTOP is an affordable sprinkler system linked to a domestic water supply, putting the reassurance of sprinkler protection within reach of private homeowners. Designed for the home environment, BLAZESTOP uses sprinkler heads concealed in the ceiling. Flexible, concealed piping makes retrofitting into homes easy and cost-effective. Designed using durable polybutylene or multilayer pex-al-pex pipe, it isn't affected by scaling, corrosion, or microbiological growth and doesn't transmit noise.



WASTEWATER SYSTEM

Hep_vO is a unique self-sealing waterless waste valve that prevents the escape of foul sewer air from waste discharge systems, and actively maintains the pressure equilibrium in soil and waste installations.

The self-sealing valve opens under the water pressure of an appliance emptying and closes to form a tight seal after the appliance has discharged under normal atmospheric conditions.

FOR MORE INFORMATION ABOUT WATERLINK CALL

0800 246 810

Leap Australasia Ltd
PO Box 38-159
61 Port Road Seaview
Lower Hutt 5010
New Zealand

t: + 64 4 568 9424
f: + 64 4 568 9423
www.leapltd.co.nz

